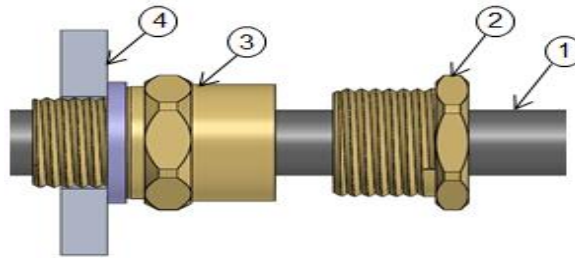


FITTING INSTRUCTIONS FOR RSU CABLE GLAND



① Unarmoured Cable outer sheath, ② Gland outer body (entry nut), ③ Gland main body & ④ Enclosure.

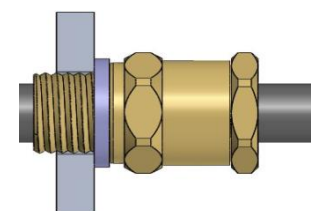
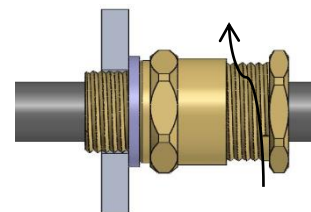
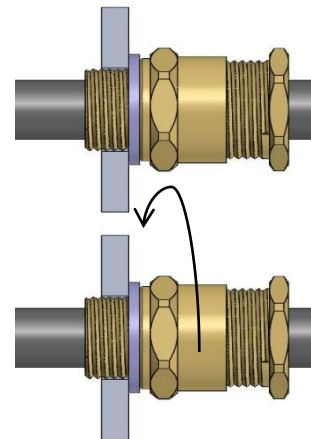
1. Dismantle the gland as shown in fig.

2. Fit the gland into the enclosure and fully tighten the gland main body with spanner or any other tool.

3. Determine the conductor length required to suit the installation and prepare the cable accordingly, removing part of the outer sheath where required to reveal the insulated conductors.

4. Slacken the entry nut (2) to relax the seal.

5. Pass the cable through the gland to the desired position, then tighten the seal nut by hand until resistance is felt (when the seal contacts the cable). Tighten with a spanner with required torque up to 30 NM.



Note:

1. If required, shroud for additional environmental conditions & operators safety, fit over the cable gland. It should be terminated to suit the cable diameter.
2. Earth tag is required, where there is requirement of earth connection.